

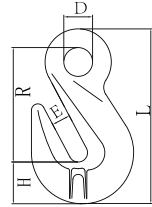


## Ti TAN G80 EYE SHORTENING CRADLE GRAB HOOK



### FEATURES

- Forged super alloy steel - quenched and tempered
- Connects directly to a chain connector
- Individually proof tested
- Complies with AS3776/EN1677
- Fatigue tested at 1.5 x WLL for 20000 cycles
- 100% Magnaflux crack detection
- Yellow powder plastified finish
- Test certificates available
- Individually proof tested



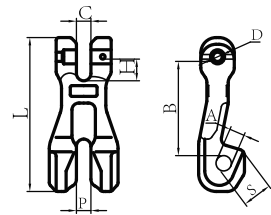
Code	Weight (kg)	WLL (t)	Dimensions (mm)				
			E	D	H	R	L
T085ESGH-6	0.14	1.1	8	13.5	17.9	51.4	75.3
T085ESGH-7/8	0.245	2	10.8	18	20	61.5	91.2
T085ESGH-10	0.65	3.2	13	20	29	80	122
T085ESGH-13	1.39	5.3	16.5	26	42.8	99.7	158
T085ESGH-16	2.2	8	20	30.5	47.7	104	169
T085ESGH-20	4.6	12.5	25	37.5	56	140	219

## Ti TAN G80 CLEVIS CHAIN CLUTCH



### FEATURES

- Forged super alloy steel - quenched and tempered
- Flexibility to shorten chain slings directly to chain
- Connects directly to a chain connector
- Complies with AS3776/EN1677
- Individually proof tested
- Fatigue tested at 1.5 x WLL for 20000 cycles
- 100% Magnaflux crack detection
- Yellow powder plastified finish
- Test certificates available



Code	Weight (kg)	WLL (t)	Dimensions (mm)							
			P	C	A	B	H	S	L	D
T073CC-6	0.17	1.1	7.5	7.5	8	44	10.3	12	73.5	7.8
T073CC-7/8	0.37	2	9.5	9.5	10.5	61.7	14	17	101	9.2
T073CC-10	0.97	3.2	13	13	12.4	92	18.4	28	138	13.2
T073CC-13	2.01	5.3	16.5	16.5	16	115	22.7	34.5	177	16.2
T073CC-16	3.32	8	21	21	19.5	143	28.5	40	220	20

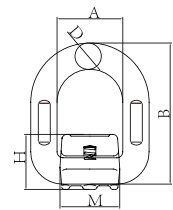
## Ti TAN G80 WELD-ON RING C/W SPRING



NB: Welding MUST be performed by a qualified welder.

### FEATURES

- Forged super alloy steel - quenched and tempered
- Used as a fixed anchor point for spreaderbeam attachment
- Used as an anchor point for load restraint applications
- Spring inside for better pivoting control
- Complete with welding instructions
- Welded to any carbon steel surfaces as a lifting point
- Complies with AS3776/EN1677
- 100% Magnaflux crack detection
- Yellow powder plastified finish
- Test certificates available
- Safety factor of 4:1



Code	Weight (kg)	WLL (t)	Dimensions (mm)				
			A	B	D	M	H
T344WODR-1T	0.4	1	41	78.5	13	37	35
T344WODR-2T	0.47	2	42	88	14	40	37
T344WODR-3T	0.69	3	45	94	17	42.5	40
T344WODR-5T	1.46	5	55	118	22	61	52
T344WODR-8T	2.5	8	70	141	26.5	70.5	57
T344WODR-15T	5.79	15	97	188	34	90	77

